

LIP-3ECTB, LIP-1ECTB, LIP-33ECTB, LIP-3333ECTB

Datasheet #89013109

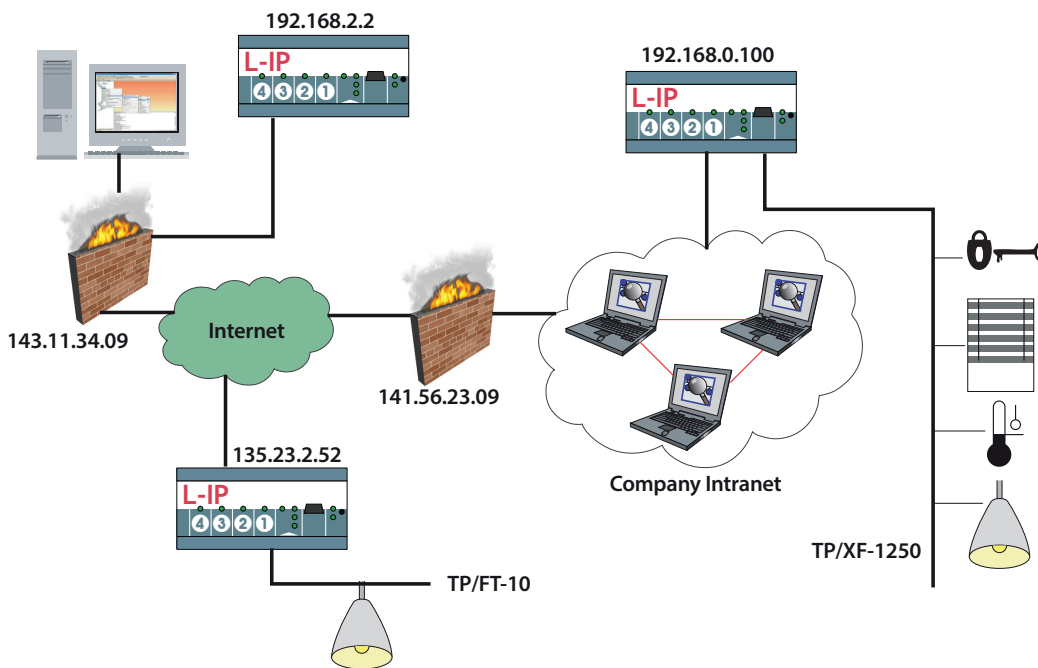
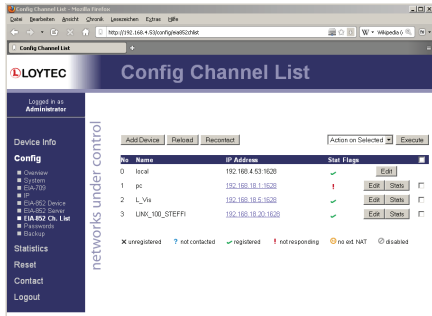


The L-IP Router connects twisted pair channels (TP/FT-10 or TP/XF-1250) with the Ethernet/IP channel (IP-852) in LonMark Systems. L-IP routes CEA-709 packets through an IP based network such as a LAN (Ethernet), an Intranet, or even the Internet. The L-IP connects to the IP network via a 100Base-T Ethernet port.

In order to provide optimal router configurations, the L-IP is available in four different versions providing either 4 x TP/FT-10, 2 x TP/FT-10, 1 x TP/FT10, or 1 x TP/XF-1250. Every L-IP supports the operating modes "Smart Switch Mode" and "Configured Router Mode".

Beside the router functionality, the L-IP Routers provide outstanding capabilities for network diagnostic and analysis. They allow the LPA (LOYTEC Protocol Analyzer) transparent access to the twisted pair channels on the device via Ethernet/IP. This feature can be used in a local Intranet or via the Internet.

The integrated CEA-852 Configuration Server can manage up to 100 IP-852 devices. The configuration is done through the built-in Web interface.



Features

- Routes packets between TP/FT-10 or TP/XF-1250 channels and Ethernet/IP (IP-852)
- Compliant with CEA-709, CEA-852, and ISO/IEC 14908-1 standard (LonMark System)
- Supports Configured Router mode, Smart Switch mode, and Repeater mode
- Built-in CEA-852 configuration server for up to 100 members
- Support for operation behind NAT routers and firewalls
- Easy installation, Auto-NAT, roaming, DHCP
- Remote LPA support with LPA-IP
- Integrated web server for device and IP-852 configuration
- Built-in enhanced communication test for IP-852
- Network diagnostic LEDs

LIP-3ECTB, LIP-1ECTB, LIP-33ECTB, LIP-3333ECTB

| Specifications | | | | |
|----------------------|---|----------------|--------------|------------------------------------|
| Type | LIP-3ECTB | LIP-1ECTB | LIP-33ECTB | LIP-3333ECTB |
| Power supply | 12-35 VDC / 12-24 VAC \pm 10 %, typ. 3 W | | | |
| Operating conditions | 0 °C to 50 °C, 10–90 % RH @ 50 °C, non condensing, degree of protection: IP40, IP20 (terminals) | | | |
| Dimensions (mm) | 107 x 100 x 60 (L x W x H), DIM009 | | | 159 x 100 x 60 (L x W x H), DIM007 |
| Installation | DIN rail mounting following DIN 43880, top hat rail EN 50022 | | | |
| Interfaces | 1 x Ethernet (100Base-T), LonMark IP-852, HTTP, FTP | | | |
| | 1 x TP/FT-10 | 1 x TP/XF-1250 | 2 x TP/FT-10 | 4 x TP/FT-10 |
| Tools | Configuration via web browser or console RS-232 (EIA-232) | | | |

| Resource limits | |
|----------------------|--|
| Configuration Server | CEA-852 configuration server for up to 100 members on the IP-852 channel |

| Order number | Configuration |
|--------------|---|
| LIP-3ECTB | CEA-709/IP-852 Router, 1 x TP/FT-10, 1 x Ethernet-Port (IP-852) |
| LIP-1ECTB | CEA-709/IP-852 Router, 1 x TP/XF-1250, 1 x Ethernet-Port (IP-852) |
| LIP-33ECTB | CEA-709/IP-852 Router, 2 x TP/FT-10, 1 x Ethernet-Port (IP-852) |
| LIP-3333ECTB | CEA-709/IP-852 Router, 4 x TP/FT-10, 1 x Ethernet-Port (IP-852) |
| LPOW-2415B | Power supply unit with power connector 24 VDC, 15 W |
| LT-03 | Network terminator, 1 x TP/FT-10 or TP/LPT-10 (bus or free topology), 1 x Network Access Connector RJ45 |
| LT-13 | Network terminator, 1 x TP/FT-10 or TP/LPT-10 (bus or free topology), 1 x TP/XF-1250 |
| LT-33 | Network terminator, 2 x TP/FT-10 or TP/LPT-10 (bus or free topology) |