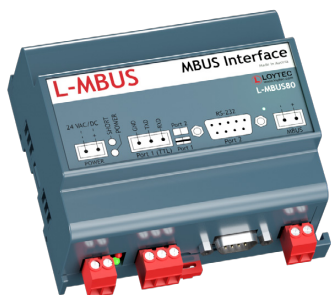
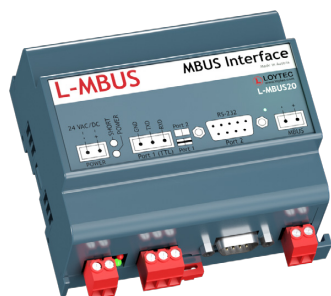


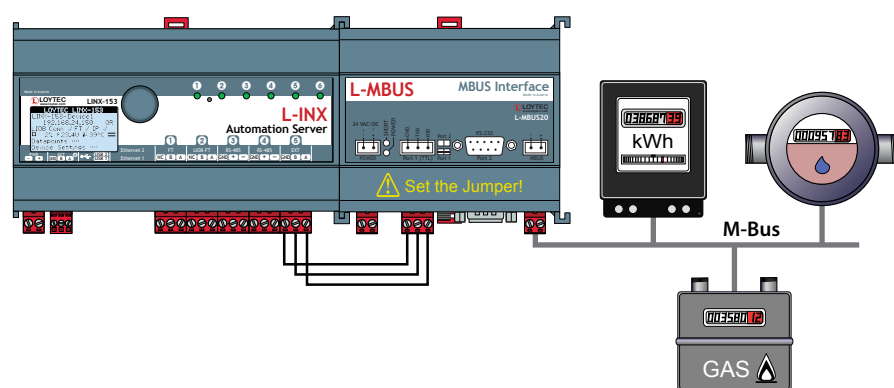
Datasheet #89027523



The L-MBUS level converters are used to connect an M-Bus network to a LOYTEC device. Up to 20 or 80 M-Bus devices can be connected via L-MBUS20 or L-MBUS80.

**TTL Connection**

The TTL port is used to connect the L-MBUS to the EXT port of L-INX Automation Servers, L-ROC Room Controllers, and also to the L-GATE Gateways. The interface is galvanically isolated.



**General Specifications**

Dimensions (mm)	107 x 100 x 60 (L x W x H), DIM024	
Installation	DIN rail mounting following DIN 43880, top hat rail EN 50022	
Power supply	24 VDC / 24 V AC ±10 %	
Operating conditions	0 °C to 50 °C, 10 – 90 % RH, noncondensing, degree of protection: IP40, IP20 (terminals)	

**Specifications**

Type	L-MBUS20	L-MBUS80
Power consumption	9.6 W	14.4 W
Baud rate	300 to 9600 baud	300 to 9600 baud
Interfaces	1 x TTL or 1 x RS-232 (EIA-232), galvanically isolated 1 x M-Bus	1 x TTL or 1 x RS-232 (EIA-232), galvanically isolated 1 x M-Bus
For use with	L-INX Automation Servers, L-ROC Room Controllers, L-GATE Gateways, LIOB-586/587/588/589 Controllers	

**Resource limits**

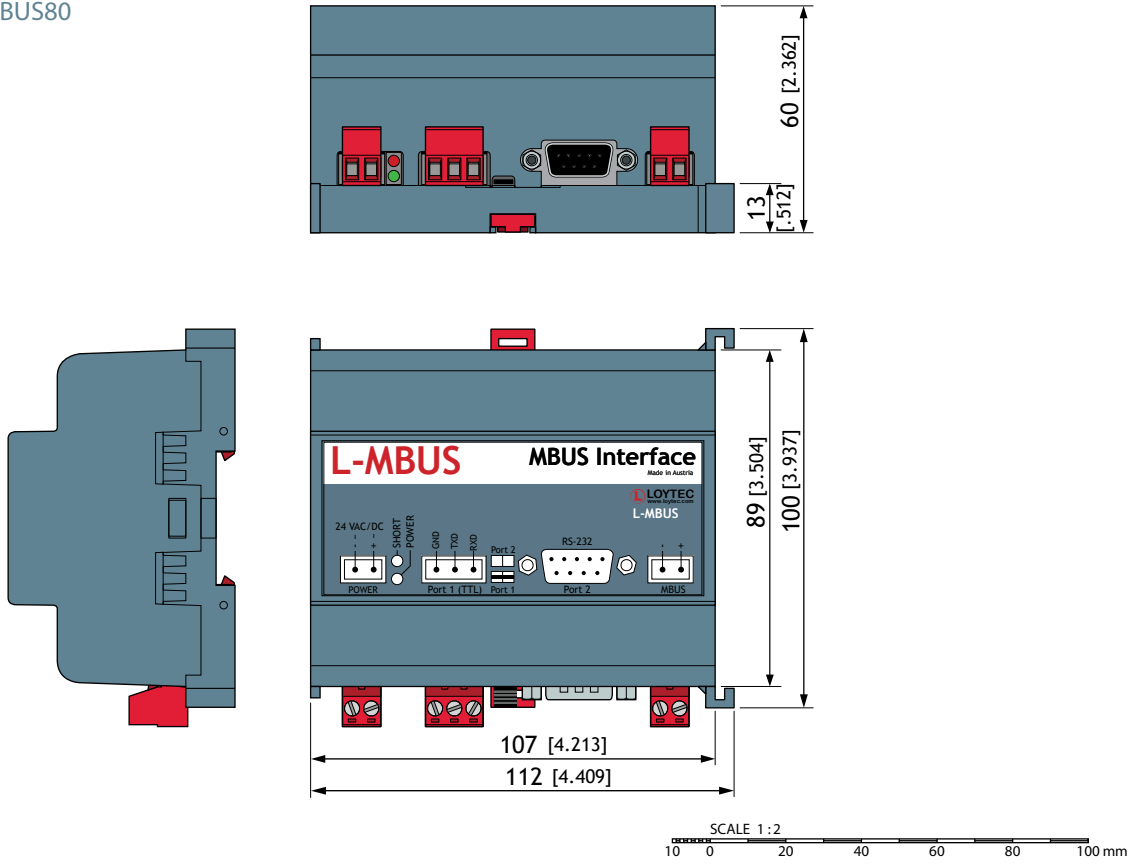
M-Bus devices	Up to 20	Up to 80
---------------	----------	----------

**Order number Product description**

L-MBUS20	M-Bus Level Converter, Interface for up to 20 M-Bus devices
L-MBUS80	M-Bus Level Converter, Interface for up to 80 M-Bus devices

# Dimensions of the devices in mm and [inch]

**DIM024** L-MBUS20  
L-MBUS80



The products of LOYTEC electronics GmbH are subject to constant development. Therefore, LOYTEC reserves the right to modify technical specifications at any time without prior notice. The most recent datasheet can be downloaded from [www.loytec.com](http://www.loytec.com).